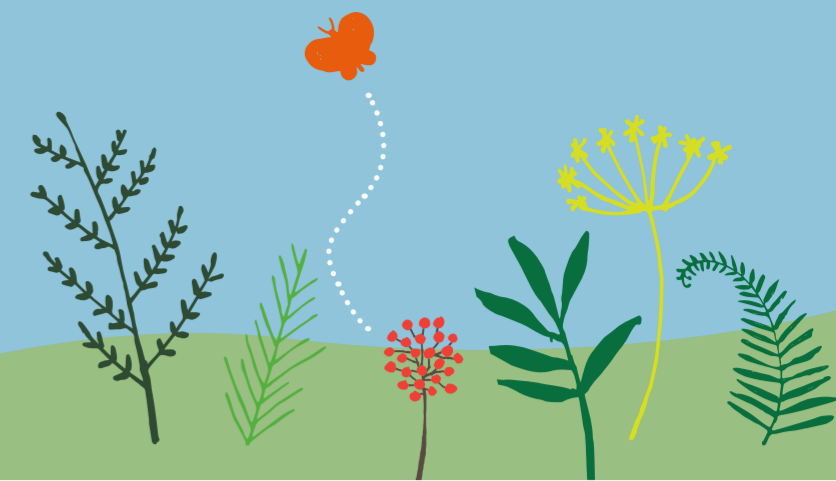


# EAST END PARK

## WHERE ARE WE NOW, PLAN ON A PAGE



Park Parade is in need of resurfacing. Material and width to be maintained for walking and cycling club along with events.



Play area is dated and some pieces are broken. Over hanging trees contribute to the poor state of the area. However, the large area allows opportunity for an exciting new neighbourhood playground.



Well used community bowling green, but club building in need for new frontage including refurbishment of retaining wall, steps, ramps and flowerbeds.



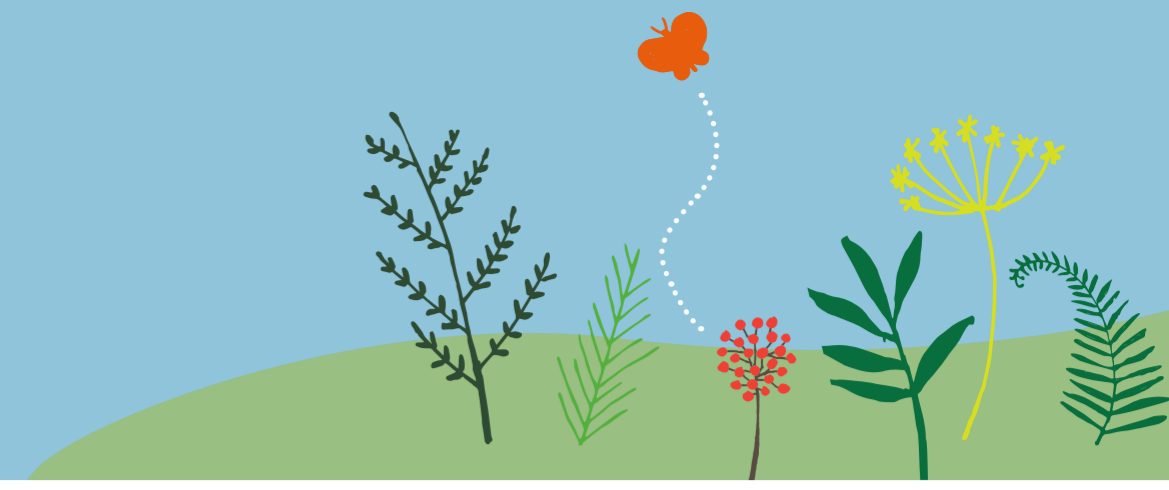
No connecting paths from main circular path causing wear and obvious desire lines. DDA compliant paths and ramps to be introduced.



Entrances not DDA compliant. Unattractive fences around boundaries and access points do not feel welcoming and don't fit with traditional stone piers.

# EAST END PARK

## PLAN ON A PAGE



### Parks and Countryside Priorities

**Health and Wellbeing**  
Providing a wide range of opportunities for people to receive the health benefits of spending time in green spaces

**Quality**  
Providing high quality parks and green spaces.

**Climate and Biodiversity**  
Increasing wildlife and biodiversity and reducing the impact of climate change.

**Access for all**  
Ensuring that parks and green spaces are accessible to everyone.

**Culture**  
Providing exciting, diverse, interesting and enjoyable green spaces that reflect the history and culture of their local communities.

**Child Friendly**  
Providing green spaces that children and teenagers love to visit.

**Working with Communities**  
Having a positive, open, helpful and collaborative approach.

**Financial Sustainability**  
Ensuring that good quality public green space is available for the long term.

